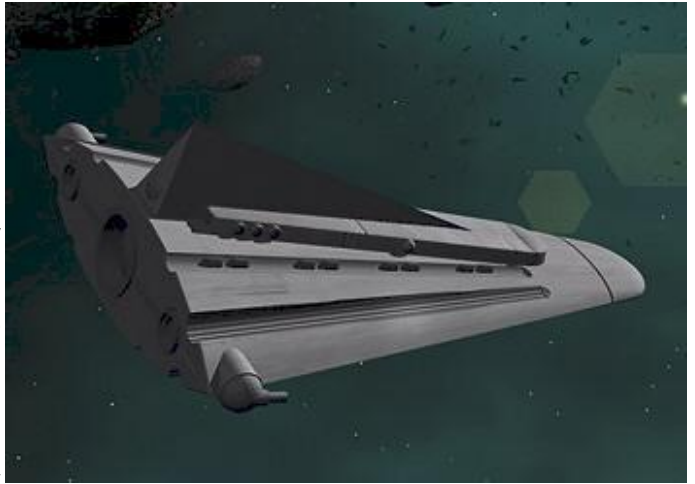


Battle Cruiser (type BC): Using a custom 1200-ton hull, the battle cruiser is designed for independent patrol and internal peacekeeping within the imperium. It has jump drive-Y, manoeuvre drive-Y and powerplant-Y, giving the ship performance of jump-4 and 4-G acceleration. Fuel tankage of 560 tons supports the powerplant for eight weeks and allows one jump-4 (or a number of short range jumps). Adjacent to the bridge is Model/7 computer. There are forty seven staterooms. Battle cruisers are equipped with twelve triple turrets, all with fire control; ten mount beam lasers and the remaining two mount missile tubes. A 14 ton magazine holds 280 additional missiles. There are five ship's vehicles: a pinnace is carried as a troop transport and general cargo ferry, three air/raft are used by the crew, and a G-Carrier is used by the marines when on a world's surface. A 10-ton troop assembly area is provided for the marines, and they



also have access to five drop capsule launchers, each capable of launching three marine drop capsules from orbit. Cargo capacity is 58 tons. The hull is streamlined to allow for gas giant refuelling operations.

The battle cruiser has a crew of 79: commander, executive officer, operations officer, assistant ops officer, chief engineer, flight officer, tactical officer, computer officer, doctor, nurse, medic, 2 pilots, 2 navigators, 2 comms operators, 12 gunners, 7 engineers, 3 admin staff, 2 missile loaders, steward, boat pilot, boat gunner, boat handler and a marine contingent. This consists of a commanding officer (a captain), three squad commanders (all lieutenants), and 30 enlisted men. The contingent is composed of a four-man command section, a 10-man boarding party, a 10-man battle dress-equipped orbital jump squad and a 10-man infantry squad operating from the G-Carrier. Two of the ship's engineers are trained to service the ship's vehicles. The ship costs MCr 831.13 and takes 32 months to build.

Most battle cruisers of the type illustrated are of the Kinunir class. Examples include:

<i>Kinunir</i>	<i>Luuru</i>	<i>Kharkar</i>
<i>Shulgi</i>	<i>Ishmeilum</i>	<i>Kagukhasaggan</i>
<i>Zaggisi</i>	<i>Ukushki Sar</i>	<i>Apishal</i>
<i>Urshu</i>	<i>Adamdun</i>	<i>Markashi</i>

Battle Cruiser (type BC)		Tons	Price (MCr)
Hull	1200 tons	-	120
Streamlining		-	12
Jump Drive Y	Jump 4	120	230
Manoeuvre Drive Y	4G	45	92
Power Plant Y	4	70	184
Bridge		24	6
Computer	Model 7	9	80
Fuel: Jump	One jump-4	480	-
Fuel: Powerplant	Eight weeks operation	80	-
Weapons	2 Triple Turrets (missile racks)	2	6.7
	10 Triple Turrets (beam lasers)	10	41
Cargo	58 tons	54	-
Magazine	280 missiles (extra)	14	1.4
Staterooms	47 (15 single, 32 double occupancy)	188	23.5
Craft	Pinnace	40	20
	G-Carrier	8	1.0
	3 Air/Raft	12	1.8
Extras	5 Drop Capsule Launchers; 3 capsules each	30	3.5
	10 ton Troop Assembly Area	10	
Crew Complement	79 (includes 34-man platoon of marines)	-	-
		1200	MCr 831.13